



**Thermo Scientific Nunclon Sphera
Flasks, Dishes and Plates**

**making your
most valuable work**
your best work

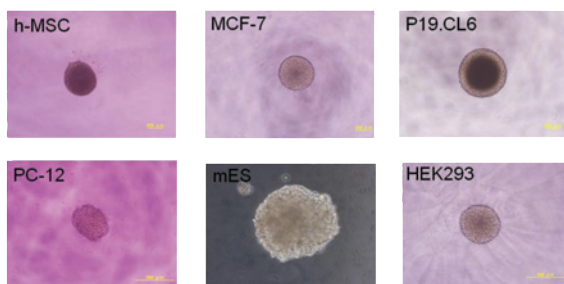
Thermo
SCIENTIFIC

Advancing your cell culture research

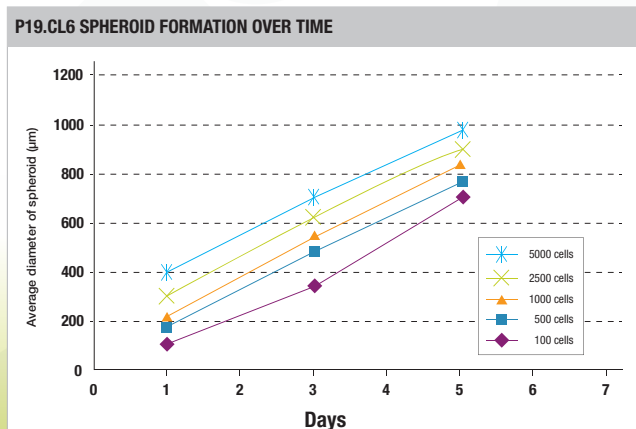
Optimizing spheroid formation

The Thermo Scientific™ Nunclon™ Sphera culture surface allows cells to grow in suspension with virtually no cell attachment. The new surface supports many different cell types and their ability to generate spheroids; studies show that over time the spheroids grow in volume, indicating that the new surface enables consistent, repeatable cell growth.

ENHANCING SPHEROID CULTURES ACROSS MANY CELL TYPES



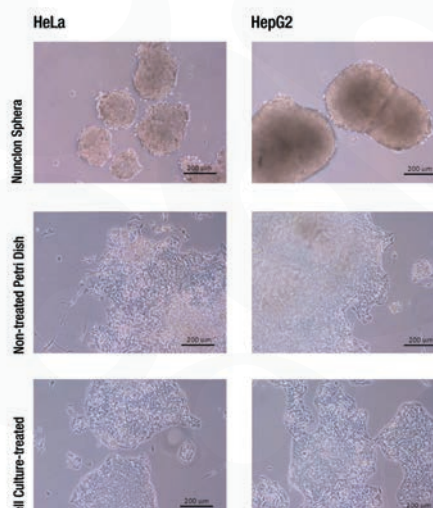
EXPANDING SIZE OF SPHEROIDS WITH DIFFERENT SEEDING DENSITY



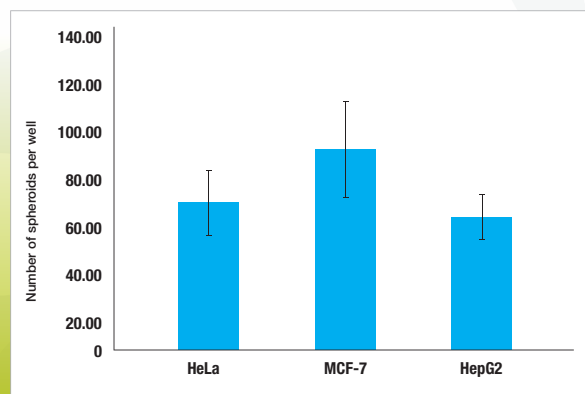
Growing 3D cancer cultures

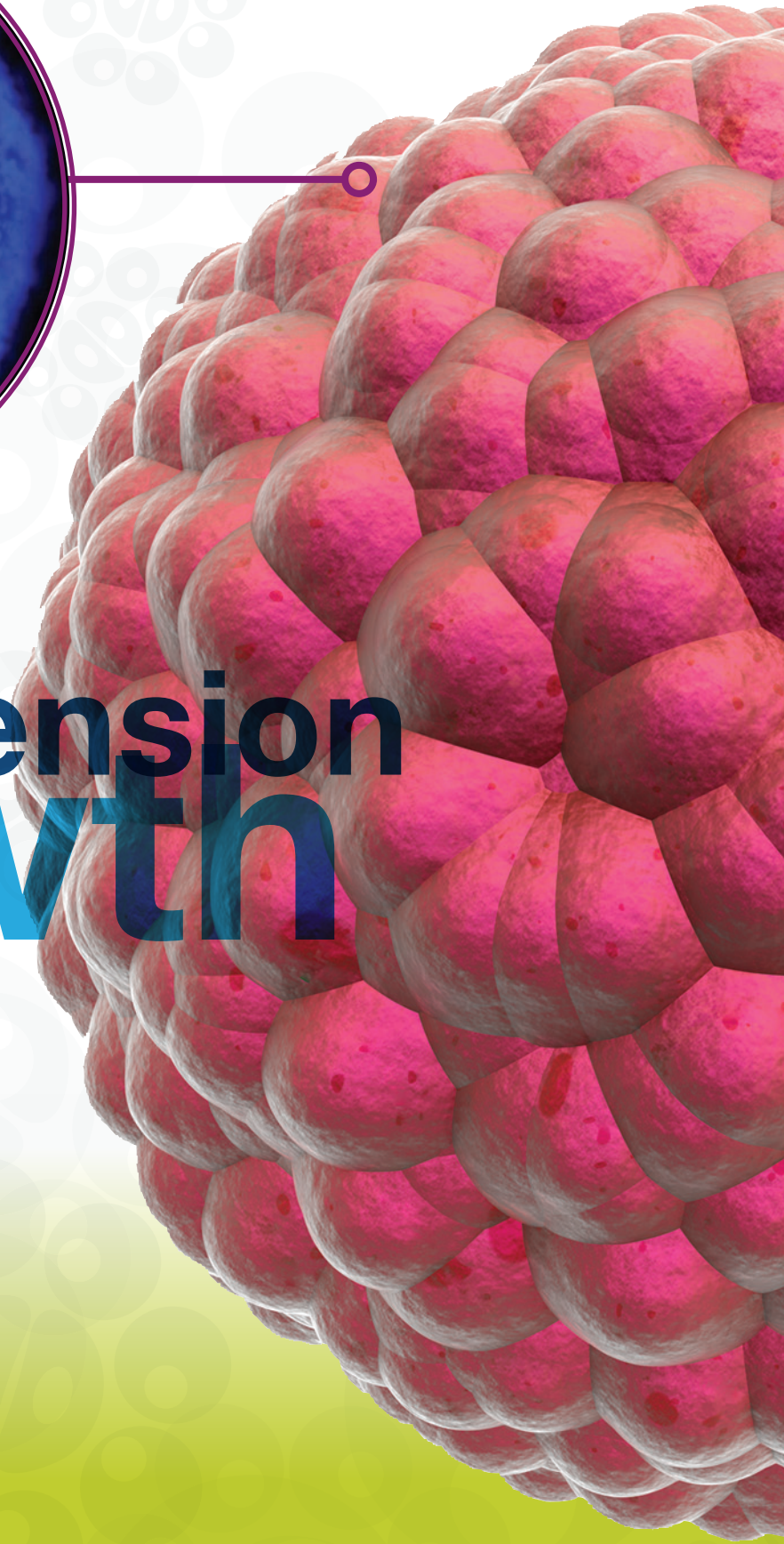
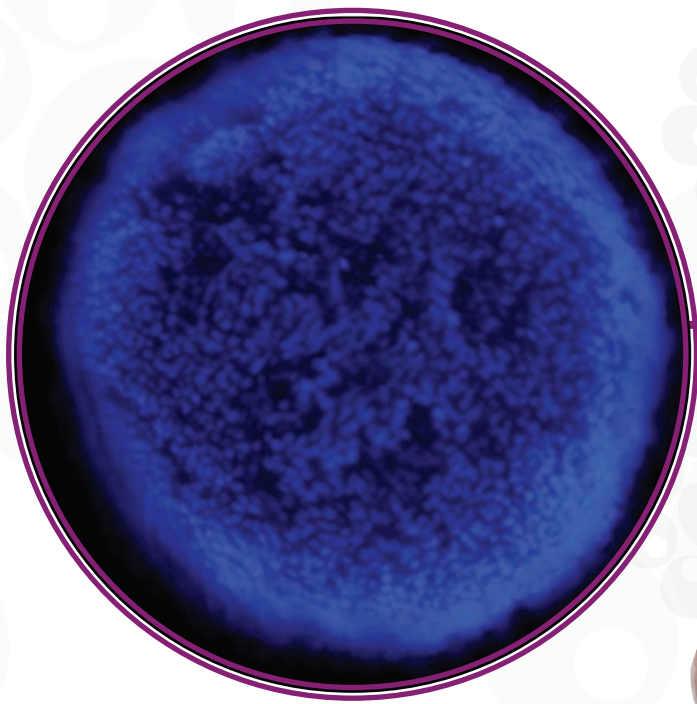
The Nunclon Sphera surface minimizes variability and supports the consistent formation of cancer spheroids that simulate the 3D structures of tumor growth, providing a better model system for studying tumor cell progression and efficacy of anticancer agents *in vitro*.

OUTPERFORMING NON-TREATED PETRI DISH FOR CANCER SPHEROID CULTURE



GENERATING FAVORABLE NUMBER OF CANCER SPHEROIDS





suspension
growth

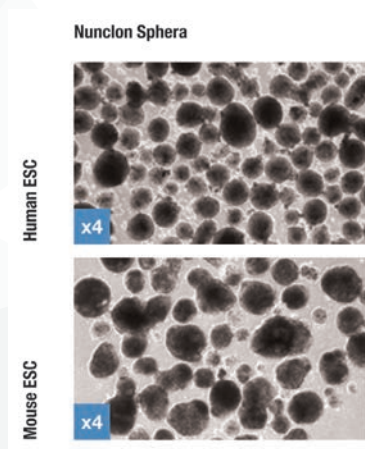
Elevating your stem cell research

Promoting formation of embryoid bodies (EB)

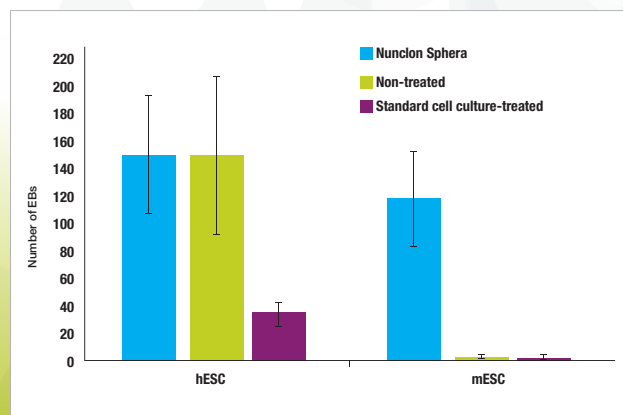
As an important milestone in the differentiation process, the Nunclon Sphera surface demonstrates superior quality for embryoid body formation of pluripotent stem cells with minimal spontaneous differentiation. The resultant cells are able to differentiate into all three germ layers.



OPTIMIZING EB FORMATION OF PLURIPOTENT STEM CELLS

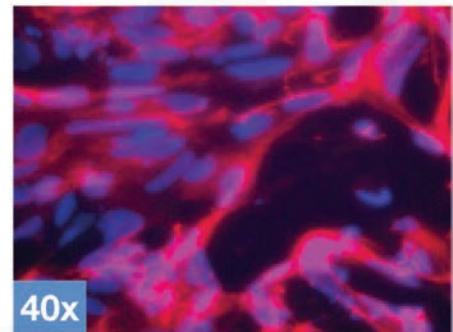


OUTPERFORMING OTHER SURFACES FOR CONSISTENT EB FORMATION OF DIFFERENT PLURIPOTENT STEM CELLS

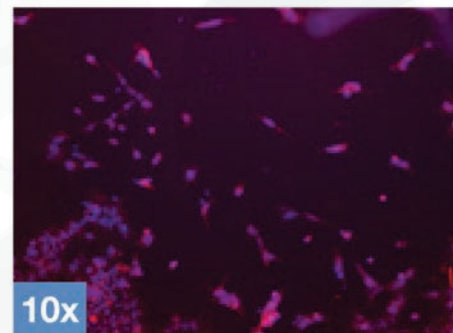


MAINTAINING DIFFERENTIATION POTENTIAL OF PLURIPOTENT STEM CELLS

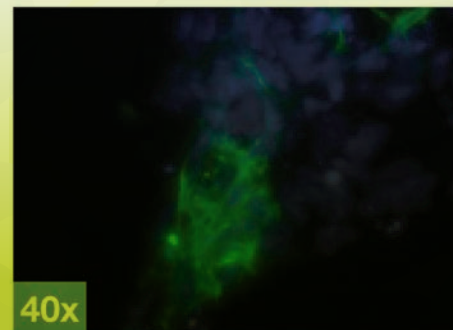
Beta-Tubulin

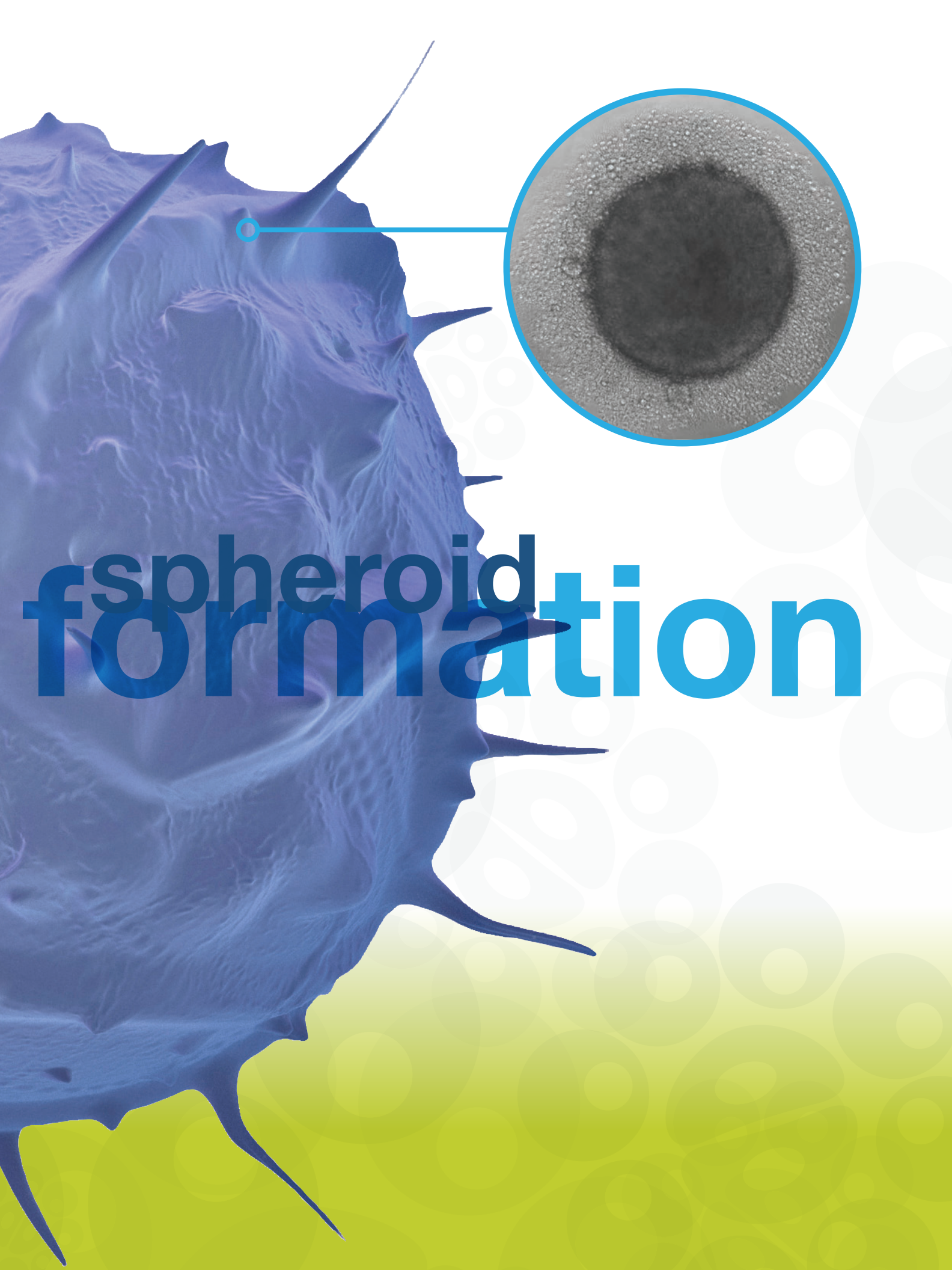


AFP



Alpha-SMA





spheroid formation

Ordering Information

Thermo Scientific Cat. No.	Description	Units per bag	Units per case
174925	Microwell 96U-Well Plate, Round Bottom, Well Volume 300 µL	1	8
174927	Microwell 96F-Well Plate, Flat Bottom, Well Volume 400 µL	1	8
174929	Microwell 96U-Well Plate, Round Bottom Bulk Pack	5	50
174930	Multidish 24-Well, Culture Area 1.9 cm ²	1	7
174931	Multidish 12-Well, Culture Area 3.8 cm ²	1	7
174932	Multidish 6-Well, Culture Area 9.6 cm ²	1	7
174943	Dish 35 MM, Culture Area 8.8 cm ²	5	20
174944	Dish 60 MM, Culture Area 21.5 cm ²	5	20
174945	Dish 90 MM, Culture Area 56.7 cm ²	5	20
174951	T25 Cell Culture Flask, Culture Area 25 cm ²	6	18
174952	T75 Cell Culture Flask, Culture Area 75 cm ²	4	24



www.thermoscientific.com/sphera

© 2013 Thermo Fisher Scientific, Inc. All rights reserved. All other trademarks are the property of Thermo Fisher Scientific Inc. and its subsidiaries.

ANZ: Australia: 1300 735 292, New Zealand: 0800 933 966 **Asia:** China Toll-free: 800-810-5118 or 400-650-5118; India: +91 22 6716 2200, India Toll-free: 1 800 22 8374; Japan: +81 3 5826 1616; Other Asian countries: 65 68729717
Europe: Austria: +43 1 801 40 0; Belgium: +32 53 73 42 41; Denmark: +45 4631 2000; France: +33 2 2803 2180; Germany: +49 6184 90 6940, Germany Toll-free: 08001-536 376; Italy: +39 02 02 95059 or 434-254-375; Netherlands: +31 76 571 4440; Nordic/Baltic countries: +358 9 329 100; Russia/CIS: +7 (812) 703 42 15; Spain/Portugal: +34 93 223 09 18; Switzerland: +41 44 454 12 12; UK/Ireland: +44 870 609 920
North America: USA/Canada +1 585 586 8800; USA Toll-free: 800 625 4327 **South America:** USA sales support: +1 585 899 7198
Countries not listed: +49 6184 90 6940 or +33 2 2803 2180

BRLSPSPHERA 1213

Thermo
SCIENTIFIC
Part of Thermo Fisher Scientific